

EN Calligraphy Starter Kit

About the Calligraphy Starter Kit

You can draw beautiful text and patterns in calligraphy on a material by installing the specially designed calligraphy pen into your cutting machine.

This item is compatible with the Brother ScanNCut DX machine.

Important Safety Instructions

WARNING

CHOKING HAZARD

- This product contains small parts and is not intended for use by children of any age. Keep product out of the reach of children or else choking or other injury may result.

CAUTION

- Do not put the ink from the calligraphy pen in your mouth. The calligraphy pen contains chemicals that should not be swallowed. If accidentally swallowed, immediately rinse mouth out with water. If symptoms develop, obtain medical attention.

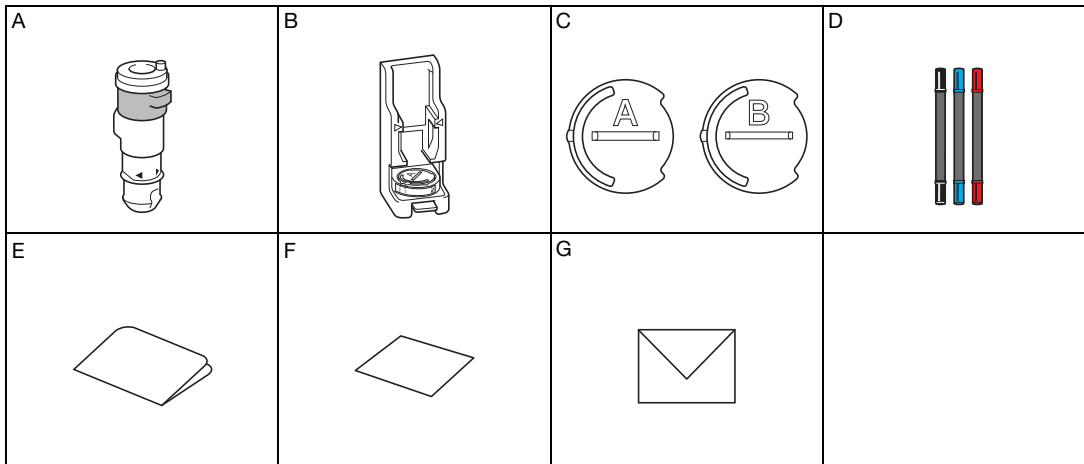
Precautions

In order to use the Calligraphy font, it is necessary to update the software of the cutting machine to the latest version. For detailed instructions on updating the machine, refer to the Operation Manual supplied with it.

- On some materials, the ink of the calligraphy pen may not dry well or may easily smear. We recommend using non-porous, smooth paper stock (such as Kent Paper, included sample card).
- If the paper surface is rough, text or patterns drawn with the calligraphy pen may easily blur.
- If text or patterns drawn with the calligraphy pen are blurry, reduce the drawing speed or increase the drawing pressure.
- If the drawing pressure is too high, the pen tip may become damaged or the material may tear.
- Do not store the calligraphy pen, in an environment exposed to direct sunlight or extremely low or extremely high temperature.
- If projects made using the calligraphy pen are exposed to direct sunlight, the ink colors may fade.
- If the calligraphy pen is dropped or shaken, ink may leak out.
- If ink gets on your clothes, etc., it will not come off.
- Do not use in any way other than writing/drawing.
- After every use, attach the cap to the calligraphy pen.
- Use in an environment between 10 °C and 35 °C (50 °F and 95 °F).
- For detailed instructions on using the cutting machine, refer to the Operation Manual supplied with it.
- The contents of this document are subject to change without notice.
- The screens shown in this manual may differ from the actual ones.

Accessories

After purchasing this kit, check the contents.



Part name	
A	Calligraphy pen holder
B	Calligraphy stand
C	Pen adjusters: A *1 (for 3.5 mm pen tip), B (for 2.0 mm pen tip)
D	Calligraphy pens (black, blue, carmine red) *2
E	Activation card for access to Italic font and 30 calligraphy patterns
F	Sample card 5" x 7" (127 mm x 178 mm)
G	Envelope for sample card 5.2" x 7.2" (133 mm x 184 mm)

*1 Pen adjuster A (for 3.5 mm pen tip) is attached to the calligraphy stand.

*2 These accessories are consumables. After you have used them up, purchase calligraphy pen set 1 (CADXCLGPEN1), calligraphy pen set 2 (CADXCLGPEN2) or calligraphy pen set 3 (CADXCLGPEN3).

To purchase options, contact the retailer where this kit was purchased.

Activating Calligraphy Font and Saving to USB Flash Drive

A calligraphy font and patterns are available for immediate use in CanvasWorkspace (<http://CanvasWorkspace.Brother.com>). Use the included activation card to activate the calligraphy font and patterns in CanvasWorkspace.

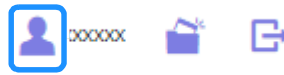
- In order to activate the calligraphy font and patterns, your cutting machine must first be registered with CanvasWorkspace. For details on registering, refer to the **Wireless Network Setup Guide for the cutting machine**.
- Note activation code is good for one ScanNCut DX machine only. Once the activation code is registered, the data cannot be used in another machine.
- Data using the calligraphy font or patterns cannot be created or edited in CanvasWorkspace. Use the cutting machine to create or edit data.
- A USB flash drive is required in order to use the calligraphy font.
- For compatible USB flash drives, please visit our website“ <http://s.brother/cpoac/> ”

Activating Calligraphy Font and Patterns in CanvasWorkspace

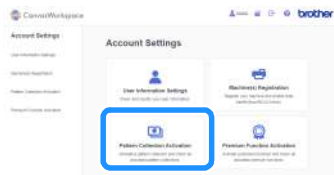
1 Log in to CanvasWorkspace. (<http://CanvasWorkspace.Brother.com>)

- First-time users should create a free account.

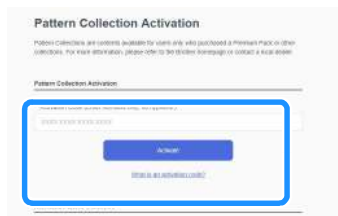
2 Click  in the upper-right corner of the screen.



3 Click [Pattern Collection Activation].

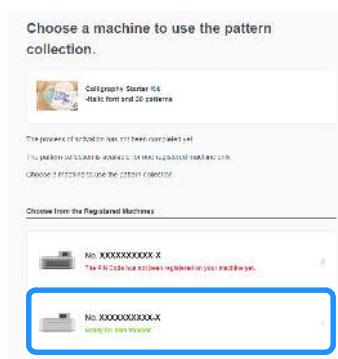


4 Type in the activation code on the included activation code card, and then click [Activate].



- The uppercase letters “O” and “l” are not used in the activation code.
- The activation code is valid for only one CanvasWorkspace login ID. The same activation code cannot be used again.

5 Select a registered cutting machine.



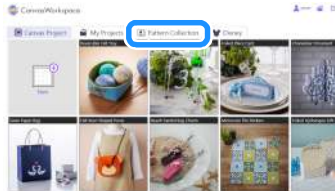
- 6 When the activation confirmation message appears, check the information, and then click [Activate] if it is correct.



- ▶ Click [OK] to complete the activation.

Saving the Calligraphy Font to a USB Flash Drive

- 1 In CanvasWorkspace, click [Pattern Collection].



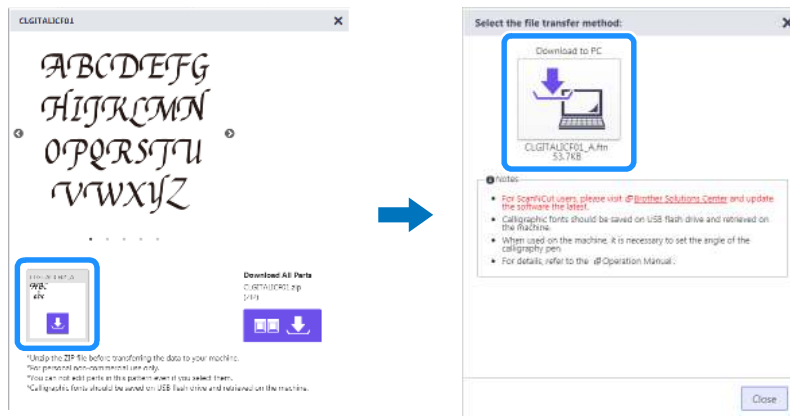
- 2 Select the activated calligraphy font.



- ① Calligraphy font
- ② Calligraphy patterns

- 3 Download the calligraphy font.

- The calligraphy font cannot be transferred to the cutting machine.



- 4 Save the calligraphy font to a USB flash drive.

- The calligraphy font saved to a USB flash drive can only be used on a machine registered with CanvasWorkspace.

Memo

- When downloading a calligraphy pattern, it can be transferred to a cutting machine registered with CanvasWorkspace as well as saved to a USB flash drive.
- Be sure to unzip the file before transferring the design to the machine.

Retrieving the Calligraphy Font on the Machine for Drawing

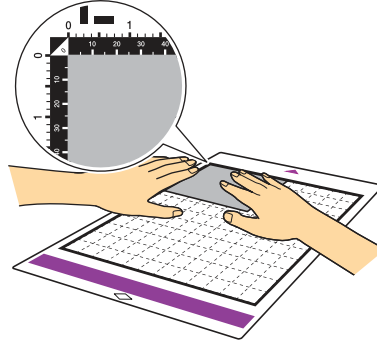
For detailed instructions on using the cutting machine, refer to the Operation Manual supplied with it.

- The appropriate mat differs depending on the material type. For details, refer to the “Mat Selection” table in the Quick Reference Guide for the cutting machine.

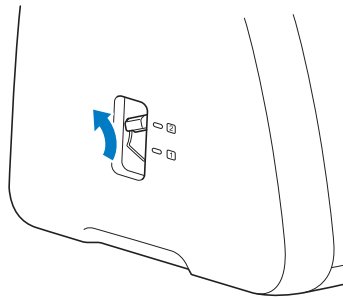
In the following procedure, the included sample card is used.

1 Attach the included sample card to the standard tack adhesive mat.

- Attach the material so it does not extend from the attaching area of the cutting mat.

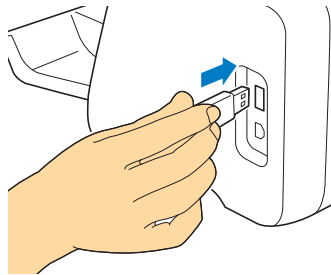


2 Set the scanner lever (on the left side of the machine) to “2”.

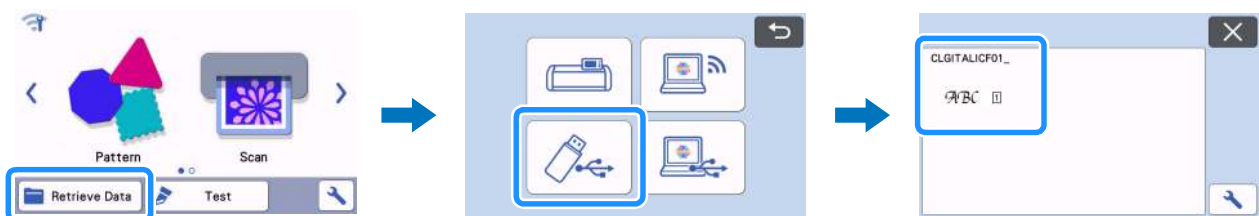


3 Insert the USB flash drive containing the calligraphy font into the USB port of the machine.

- The calligraphy font saved to a USB flash drive can only be used on a machine registered with CanvasWorkspace.



4 Retrieve the calligraphy font on the machine.



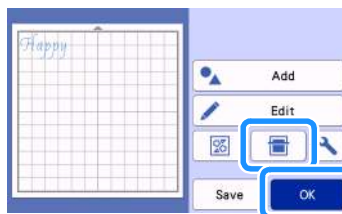
5 Type in the text.

- Characters that cannot be entered with the calligraphy font are not available.

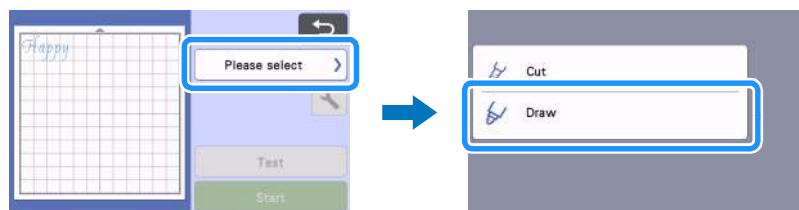


6 Press  to load the mat into the machine, and then touch  to scan the background. Position the pattern so it does not extend from the material.

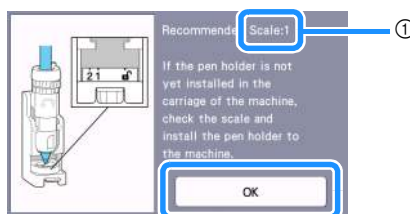
- Scanning the background allows you to check the position of the pattern within the material. If the pattern extends out of the material, touch the "Edit" key, and then adjust the position or size of the pattern. The pattern can also be moved by dragging it in the screen.
- The entered text will be edited as a single string of characters. Individual characters cannot be edited separately.
- Editing functions are available for enlarging, reducing and copying.
- Calligraphy data at a different angle cannot be added. For details on the angle of the calligraphy font, see "Setting the Angle of the Calligraphy Pen" on page 13.



7 Select "Draw" in the preview screen.



8 Setting information necessary for drawing with the calligraphy font appears. Refer to "Using the Calligraphy Pen Holder" on page 8 to prepare the calligraphy pen.

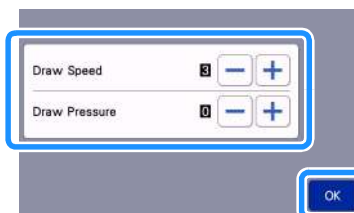


① Scale setting

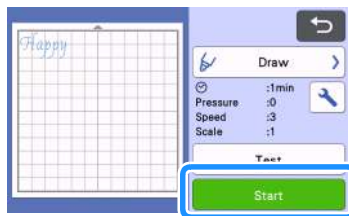
- ▶ After the calligraphy pen holder is installed in the carriage, touch the "OK" key.

9 Touch , to check if the setting for "Draw Speed" and "Draw Pressure" is the default setting.

- If the drawing speed is too high, the text or patterns may become blurry. Adjust it to the appropriate setting.
- If the drawing pressure is too high, the pen tip may become damaged or certain types of material may tear. Adjust it to the appropriate setting.
- The appearance of the finished project differs depending on the specified drawing pressure setting. Adjust the setting while checking the result of trial drawing using the same material as that used in your project.



- 10 Touch the “Start” key to start drawing.



- When drawing is finished, a message appears in the screen. Touch the “OK” key to display the preview screen.

- 11 Before feeding out the mat, check the result, taking care not to touch the material.

- Sample result

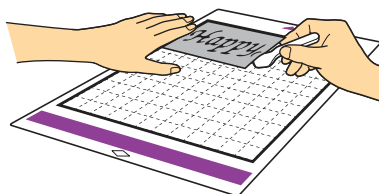
Happy

Memo

- If the result does not look like the sample above.
If the result is as shown below, rotate the pen 180 degrees, and then draw again on top of the previously drawn pattern. For details, refer to “Improving the Result of Your Project” on page 14.

Happy

- 12 Feed out the mat, and then carefully peel the material from the mat.



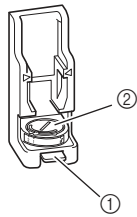
- The ink of the calligraphy pen may not dry well on some materials. Be aware that touching the ink before it is dry or excessively touching the drawn area may ruin the project.
- After using the calligraphy pen, be sure to return the dial on the calligraphy pen holder to the initial position and remove the pen. For details on the initial position of the pen holder dial, see step 4 (page 9) in “Using the Calligraphy Pen Holder”.
- Attach the cap to the pen before storing it.

Preparing the Calligraphy Pen

The calligraphy pens that can be used with this machine are those with a 2.0 mm pen tip or 3.5 mm pen tip.

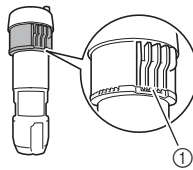
There are two pen adjusters: A (for a 3.5 mm pen tip) and B (for a 2.0 mm pen tip). As a default, pen adjuster A (for a 3.5 mm pen tip) is installed in the calligraphy stand. For details on changing the pen adjuster, see "Changing the Pen Adjuster" on page 11.

■ Calligraphy stand



- ① Release lever
- ② Pen adjuster

■ Calligraphy pen holder



- ① Dial

■ Calligraphy pen



- ① 2.0 mm pen tip
- ② 3.5 mm pen tip

Using the Calligraphy Pen Holder

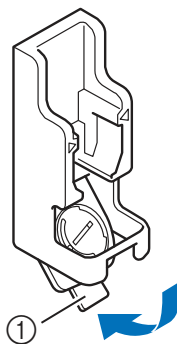
The procedure for using the calligraphy pen holder is described below.

- You can also check how to set the calligraphy pen in the video;



<http://s.brother/cvsaa/>

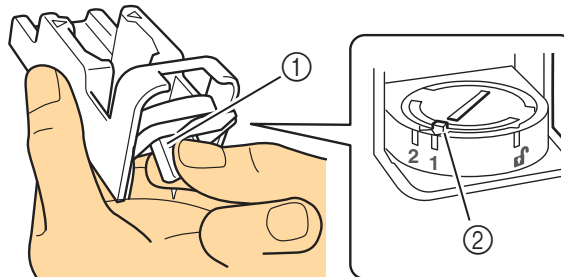
- 1** To change the indicator setting of the pen adjuster, push down on the release lever on the calligraphy stand.



- ① Release lever

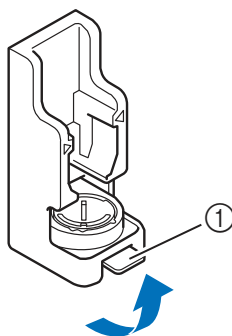
- 2** Rotate the tab on the back of the pen adjuster to align the indicator with the setting (*) for the calligraphy font to be used.

- Setting that appears in the screen shown in step **B** on page 6



- ① Tab
- ② Indicator

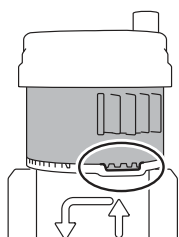
3 Return the release lever on the calligraphy stand to its original position.



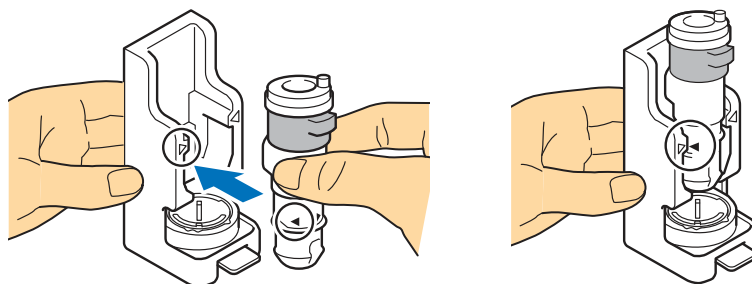
① Release lever

4 Make sure that the dial on the calligraphy pen holder is at the initial position.

- If the dial is not at the initial position, pull up the dial, and then slowly turn it to the right until it can be lowered into the notch for the initial position, referring to step **7**.

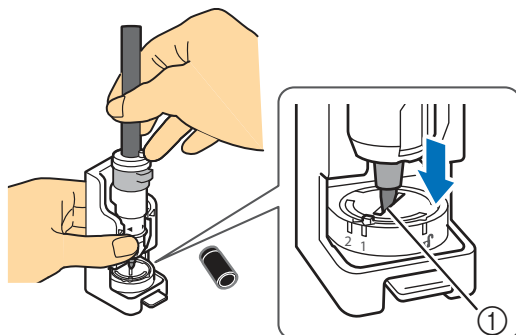


5 Place the pen holder in the calligraphy stand so that ◀ on the holder aligns with ▶ on the front of the stand.



6 Place the stand on a level surface, vertically hold the pen with the cap removed, and then insert the pen into the calligraphy pen holder so that the pen tip fits into the groove in the pen adjuster.

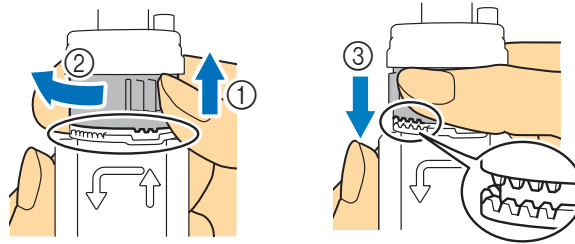
- If the pen does not fit into the pen holder, check that the dial has been returned to the initial position.
- The area around the groove in the pen adjuster may become dirty with ink. When using pens of different colors, be sure to clean the pen adjuster before using it in order to prevent the ink around the groove from getting on the pen tip. For details, see “Cleaning the Pen Adjuster” on page 16.



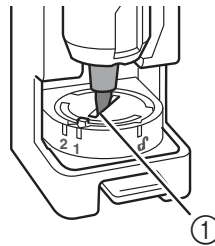
① Groove

7 While holding down the calligraphy stand, pull up the dial from the initial position in the direction of the arrow, slowly turn the dial to the left until the calligraphy pen is secured, and then lower the dial so that the teeth are engaged.

- Turn the dial enough to the left before lowering it, otherwise the pen may not be properly secured. If the pen is not properly secured, it may move out of place during operation, causing ink smearing and improper drawing.
- Do not touch an inserted pen after the dial has been tightened. Otherwise, the pen will move out of place, causing improper drawing. In addition, do not turn the dial any further after it has been tightened. Applying excessive force may cause damage.



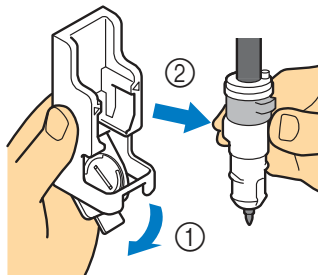
8 Make sure that the tip of the calligraphy pen is in the groove of the pen adjuster.



① Groove

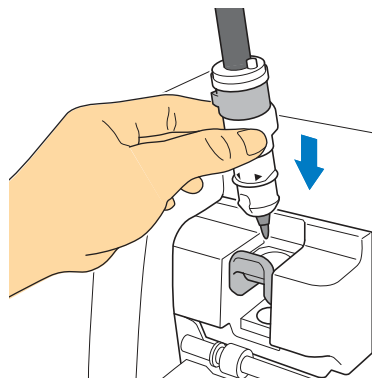
9 Push down on the release lever on the calligraphy stand, and then pull the calligraphy pen holder straight out of the stand toward you, to remove the pen holder from the stand.

- If the pen holder is removed without the release lever pushed down, the pen tip may become damaged.



10 While holding the calligraphy pen holder, insert it into the carriage of the machine and push down the holder lock lever.

- Do not hold the pen when inserting the pen holder into the carriage. Otherwise, the pen will move out of place.



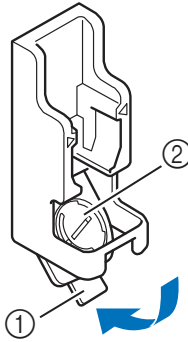
► Return to step **B** on page 6, and then continue with the operation performed from the screen.

Changing the Pen Adjuster

There are two pen adjusters: A (for a 3.5 mm pen tip) and B (for a 2.0 mm pen tip). Change the pen adjuster according to the pen to be used.

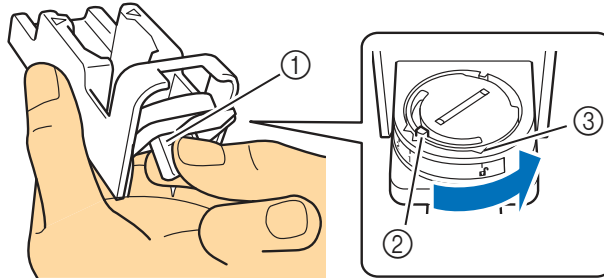
- As a default, pen adjuster A (for a 3.5 mm pen tip) is installed in the calligraphy stand.

1 Push down on the release lever on the calligraphy stand.



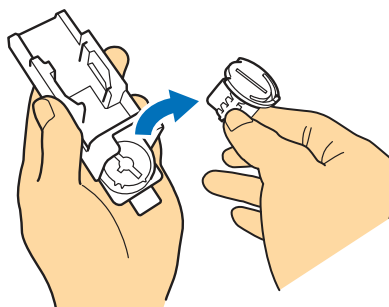
- 1 Release lever
- 2 Pen adjuster

2 Rotate the tab on the back of the pen adjuster to align the indicator with the unlock position (🔓).

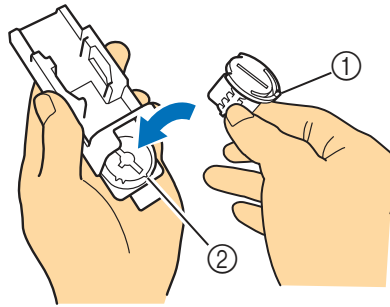


- 1 Tab
- 2 Indicator
- 3 Unlock position (🔓)

3 From the bottom of the tab, push up the pen adjuster, and then remove it from the calligraphy stand.



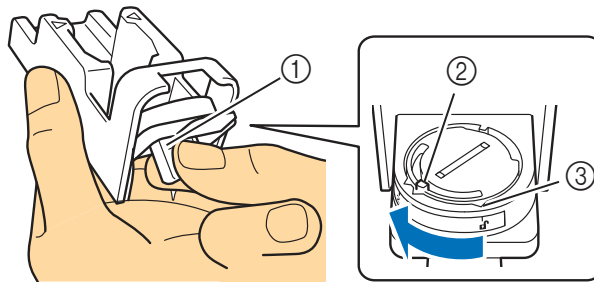
- 4** Install the pen adjuster into the calligraphy stand, aligning the indicator on the pen adjuster being installed with the unlock position (🔓).



- ① Indicator
- ② Unlock position (🔓)

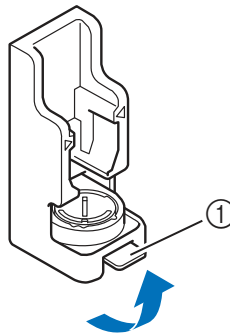
- 5** Rotate the tab on the pen adjuster to move the indicator away from the unlock position (🔓).

► The pen adjuster is secured in the calligraphy stand.



- ① Tab
- ② Indicator
- ③ Unlock position (🔓)





- 6** Return the release lever on the calligraphy stand to its original position.



- ① Release lever

Setting the Angle of the Calligraphy Pen

The setting for the pen tip angle differs depending on the calligraphy font that will be used. Refer to the following table and use the pen with the appropriate setting.
 For details on setting the pen tip angle, see “Using the Calligraphy Pen Holder” on page 8.

Font Name	Setting	Included Accessory /Optional Accessory	Model Name
Italic font 	1	Included Accessory	CADXCLGKIT1
30 patterns (20 logos and 10 patterns) 			
Gothic font 	1	Optional Accessory	CADXCLGP01
Uncial font 	2		

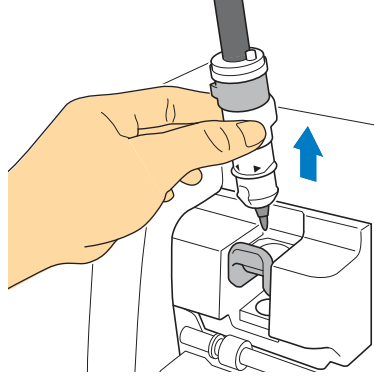
- Calligraphy fonts with different settings cannot be arranged together.

Improving the Result of Your Project

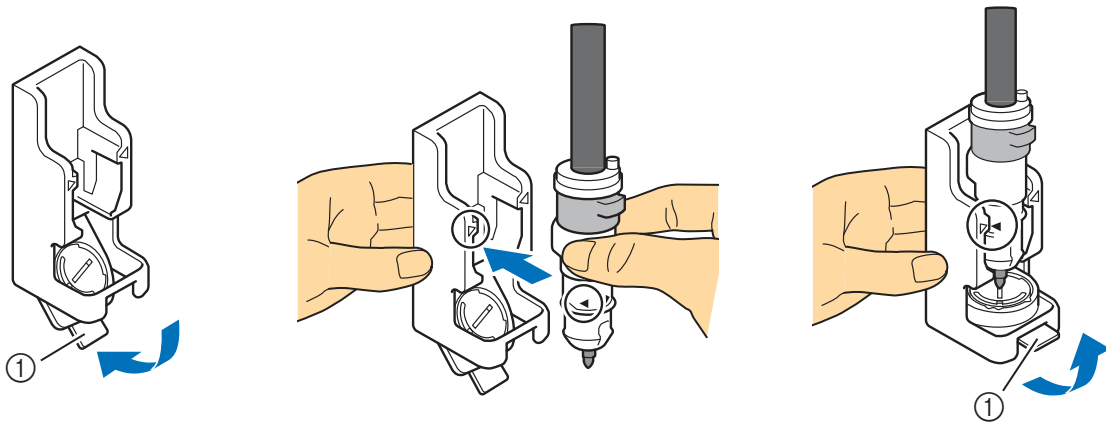
If you wish to improve the result of your project, rotate the calligraphy pen 180 degrees, and then draw again on top of the previously drawn pattern. Drawing on top of the pattern will make the drawn color darker, depending on the color of the pen.

- Check the result of the material without feeding out the mat or touching the material. For details, see step 11 (page 7) in “Retrieving the Calligraphy Font on the Machine for Drawing”.

1 Remove the calligraphy pen holder from the carriage of the machine.



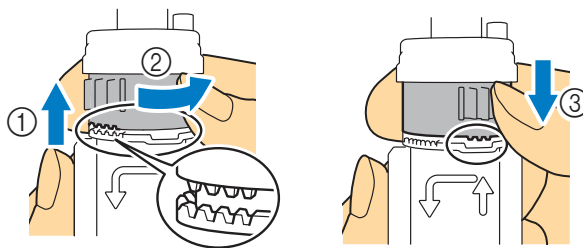
2 Push down on the release lever on the calligraphy stand, place the pen holder (with a pen installed) in the calligraphy stand so that ◀ on the holder aligns with ▷ on the front of the stand, and then return the release lever to its original position.



① Release lever

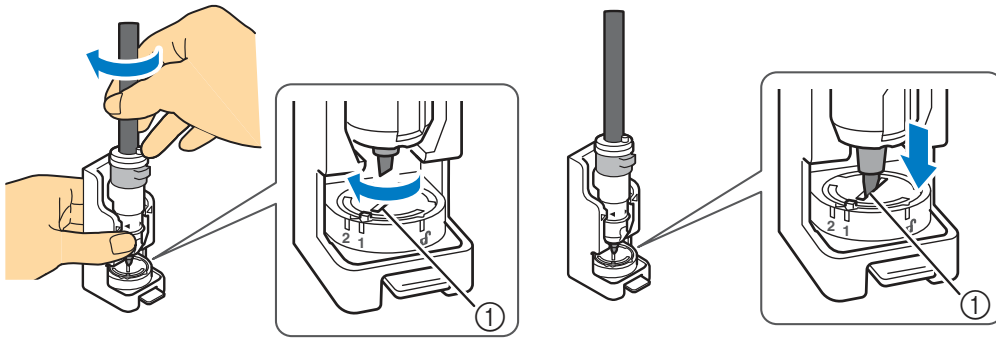
3 While holding down the calligraphy stand, pull up and slowly turn the dial in the direction of the arrows to return the upper teeth to the initial position.

- ▶ The calligraphy pen is released.



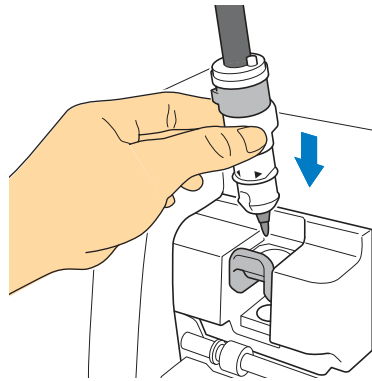
4 While holding down the calligraphy stand, lift the pen tip out of the groove, rotate the pen 180 degrees clockwise so that the pen tip fits back into the groove on the pen adjuster.

- Before rotating the pen 180 degrees, check the location of the Brother logo to make sure that the pen will be rotated 180 degrees.



① Groove

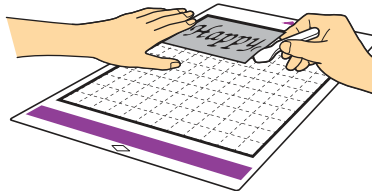
5 See steps 7 through 10 in “Using the Calligraphy Pen Holder” on page 8 to secure the calligraphy pen, then insert the calligraphy pen holder into the carriage of the machine again.



6 Select “Draw” in the preview screen, and then draw on the project again.

- If the result has not improved, reduce the drawing speed or increase the drawing pressure, and then try drawing again. Otherwise, replace the pen since it may have run out of ink.

7 Feed out the mat, and then carefully peel the material from the mat.

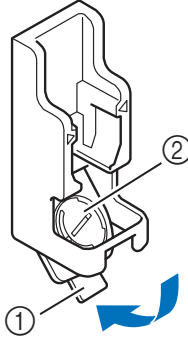


- The ink of the calligraphy pen may not dry well on some materials. Be aware that touching the ink before it is dry or excessively touching the drawn area may ruin the project.
- After using the calligraphy pen, be sure to return the dial on the calligraphy pen holder to the initial position and remove the pen. For details on the initial position of the pen holder dial, see step 4 (page 9) in “Using the Calligraphy Pen Holder”.
- Attach the cap to the pen before storing it.

Cleaning the Pen Adjuster

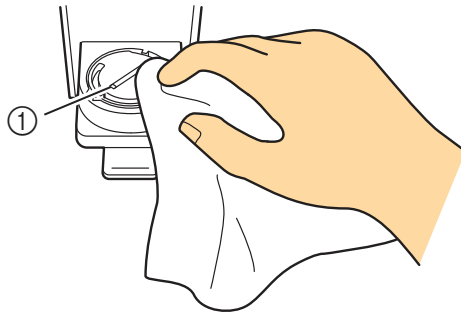
The area around the groove in the pen adjuster may become dirty with ink. When using pens of different colors, be sure to clean the pen adjuster before using it in order to prevent the ink around the groove from getting on the pen tip.

- 1 Push down on the release lever on the calligraphy stand.



- ① Release lever
- ② Pen adjuster

- 2 Dampen a soft lint-free cloth with water and firmly wring it out, and then wipe around the groove in the pen adjuster.



- ① Groove

- 3 Return the release lever on the calligraphy stand to its original position.